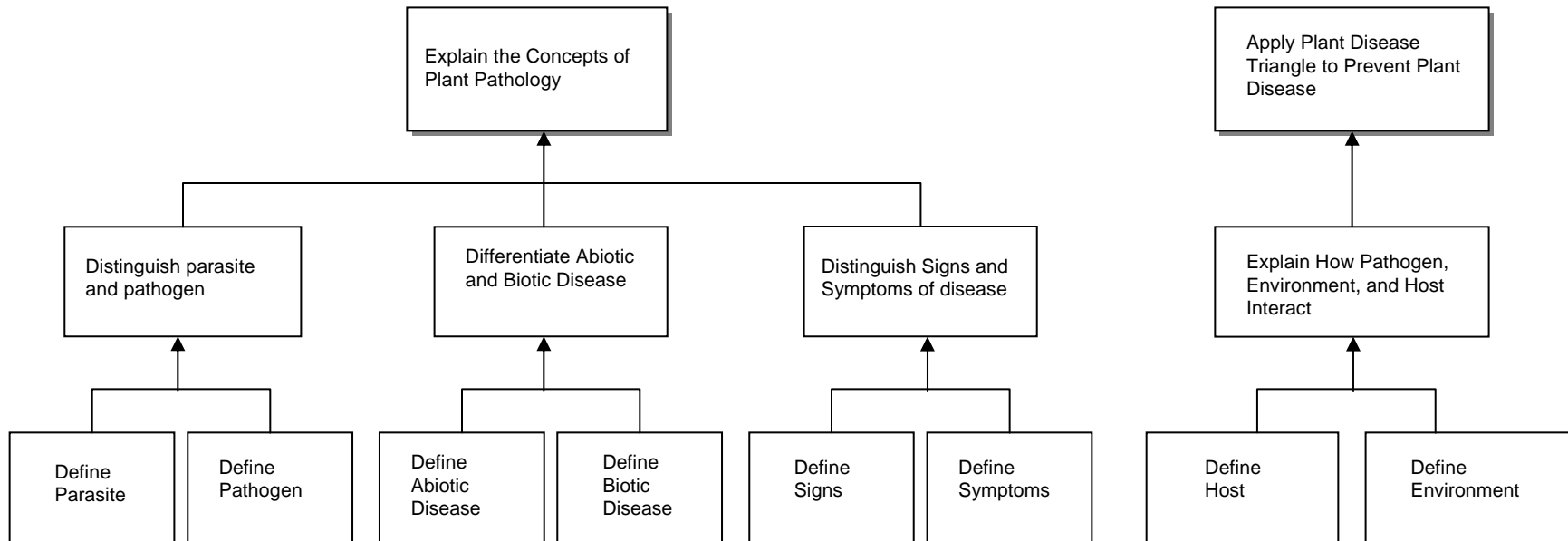
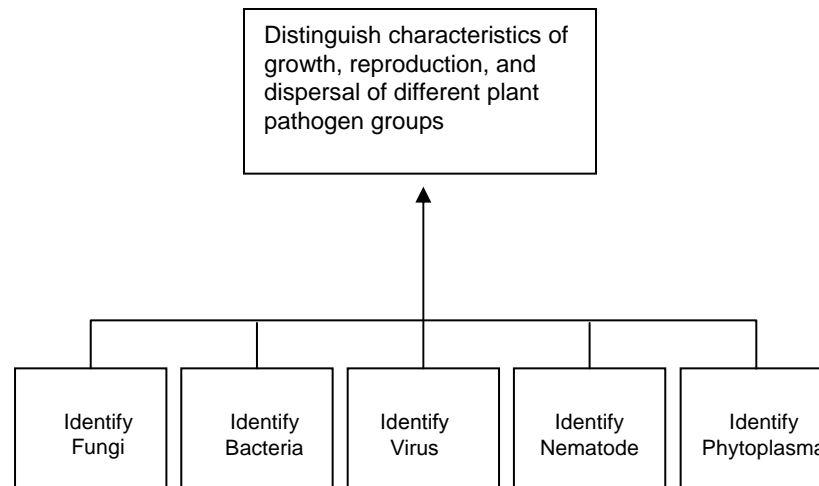


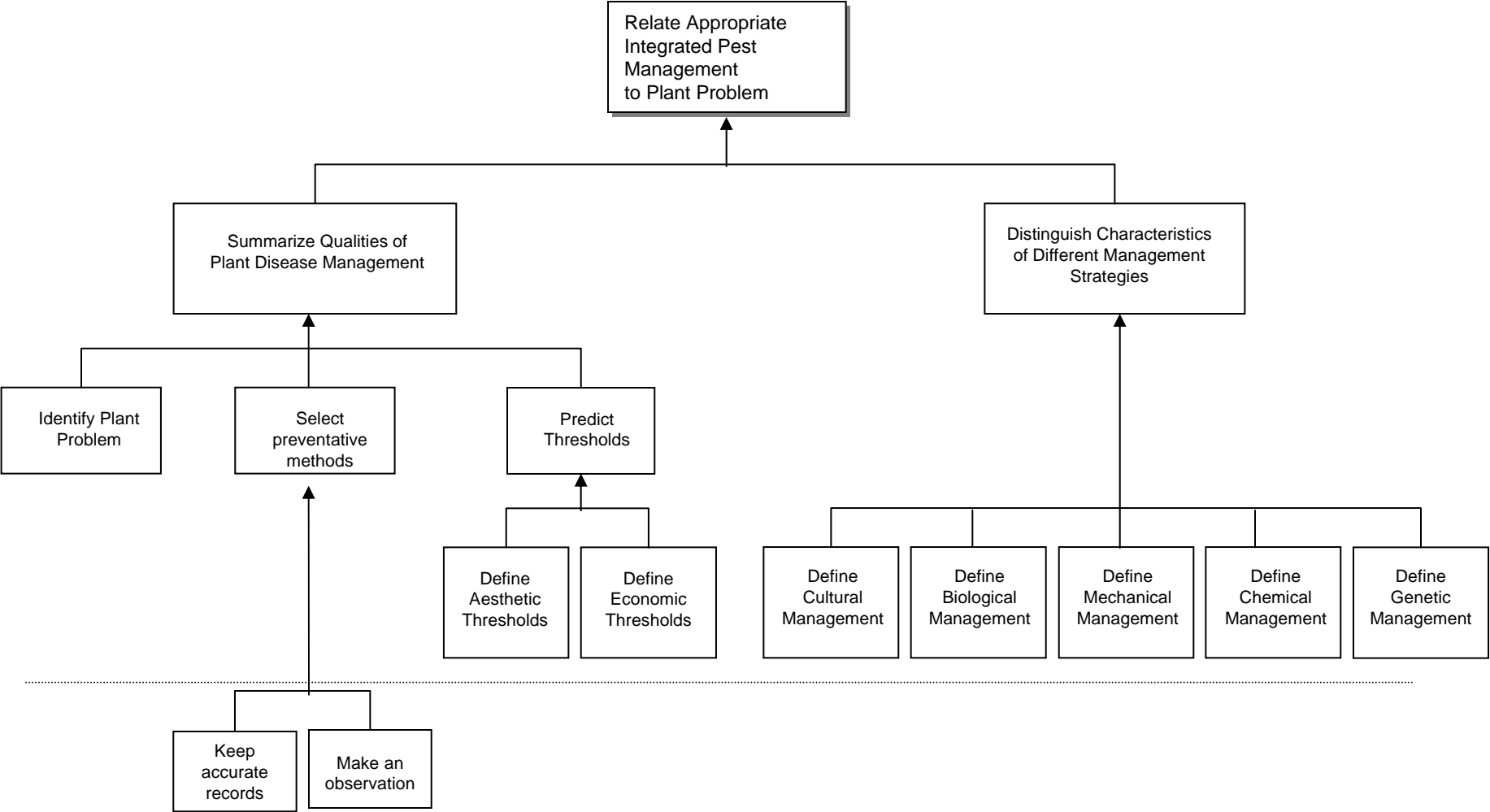
GOAL 1. Learners will be able to identify basic principles and concepts of Plant Pathology including: common types of diseases, signs and symptoms, and disease triangle



GOAL 1. Learners will be able to identify basic principles and concepts of Plant Pathology including: common types of diseases, signs and symptoms, and disease triangle



GOAL 2. Learners will be able to identify basic principles, procedures, methods and strategies for Integrated Pest Management



GOAL 3. Learners will be able to demonstrate appropriate communication procedures and actions in plant science investigation

